

Case Study: One The Elephant, London

097/Sept17



Photo: James Jones

Kawneer systems feature on an exemplary residential tall building

Windows and doors by Kawneer have helped a key marker within the regeneration of London's Elephant and Castle achieve Level 4 in the Code for Sustainable Homes.

Building: One The Elephant

Location: London

Architect: Squire and Partners

Main Contractor: Lendlease

Installer: Far East Facades

WWW.KAWNEER.CO.UK

 **KAWNEER**
AN ARCONIC COMPANY

Kawneer systems used on regeneration project

The 37-storey residential tower at One The Elephant is designed as an exemplar sustainable development, set to push the boundaries for tall buildings in London.

One The Elephant features 148 of Kawneer's AA®3572 lift/slide doors and 131 AA®720 open-out doors. These AA®720 doors are repeated at ground-floor level, along with Kawneer's series 190 heavy duty commercial entrance doors.

The development also features 664 of Kawneer's AA®720 open-in, side-hung concealed casement vents with a bespoke outer frame to integrate with the utilised bespoke curtain walling system. The handle of the vent was positioned on the bottom rail to meet Lifetime Homes requirements and was fitted with a bespoke releasable, self-re-engaging restrictor.

Lendlease and Southwark Council's vibrant mixed-use masterplan, which was designed by Squire and Partners, was designed to provide 284 new homes and a state-of-the-art leisure centre for Southwark as well as shops, cafes and improved public spaces.

As a key marker within this, One The Elephant was designed to complement the local environment including the adjacent leisure centre and the Grade II listed Metropolitan Tabernacle.

The scheme comprises two main architectural elements – the 37-storey tower with 254 homes, offering far-reaching views across London, and a four-storey pavilion offering three floors of central London living as well as retail and business space at ground floor.

Both of these use a palette of stone, glass and metal, with the tower featuring vertical metallic detailing.

With healthy living a key vision of the regeneration, each apartment at One The Elephant meets the Code for Sustainable Homes Level 4 – one of the first for a building of this kind. Consequently, the buildings are 30% more energy efficient than current regulations require and 30% more water efficient than the current average.

Tim Gledstone, partner at Squire and Partners, said: "The glazing forms an integral part of the overall facade design and the Kawneer systems play a discreet part in the overall curtain wall system."

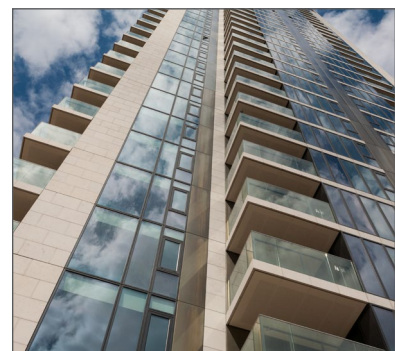
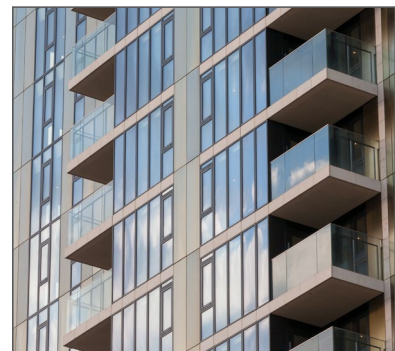
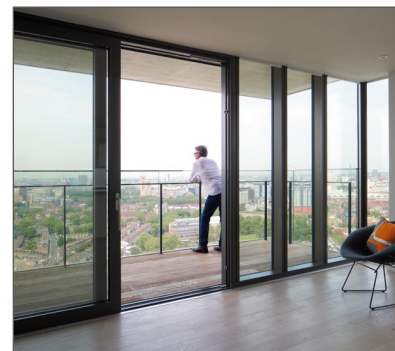
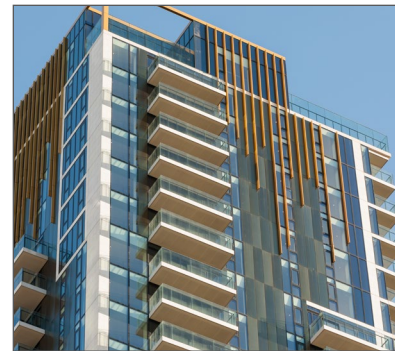
Lendlease's partnership with Southwark Council will deliver a rejuvenated 28 acres of land in the centre of Elephant and Castle in London's Zone 1 with the vision of creating Central London's new green heart.

The Kawneer systems at One The Elephant were installed by specialist sub-contractor Far East Facades in partnership with Kawneer's Special Projects team.

Please contact our Architectural Services Team if you have a project you would like to discuss: Tel: 01928 502604 / Email: kawneerAST@arconic.com

Kawneer UK Limited, Astmoor Road, Astmoor Industrial Estate, Runcorn, Cheshire WA7 1QQ
Tel: + 44 (0)1928 502500 Fax: + 44 (0)1928 502501

WWW.KAWNEER.CO.UK



Photos this page:
James Jones and James Balston